



NOTES:
 1. ALL ROADS ON MBTS PROPERTY TO BE PRIVATE ROADS BUILT TO DELDOT STANDARDS.
 2. ALL ENTRANCES ONTO PUBLIC ROADS SUBJECT TO DELDOT APPROVAL.
 3. ALL DITCH CROSSINGS SUBJECT TO REQUIRED APPROVALS AND MITIGATION.

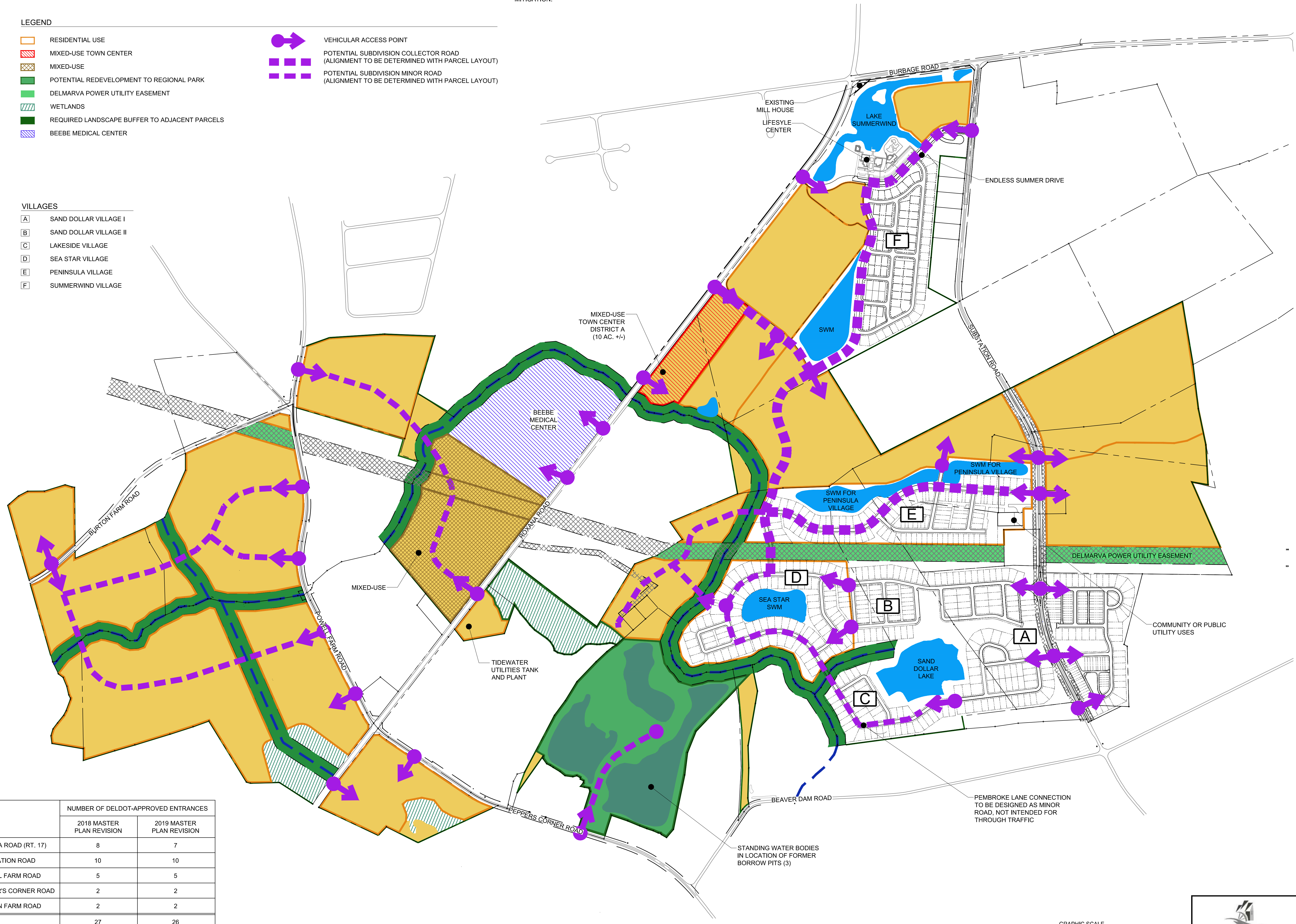
LEGEND

- RESIDENTIAL USE
- MIXED-USE TOWN CENTER
- MIXED-USE
- POTENTIAL REDEVELOPMENT TO REGIONAL PARK
- DELMARVA POWER UTILITY EASEMENT
- WETLANDS
- REQUIRED LANDSCAPE BUFFER TO ADJACENT PARCELS
- BEEBE MEDICAL CENTER

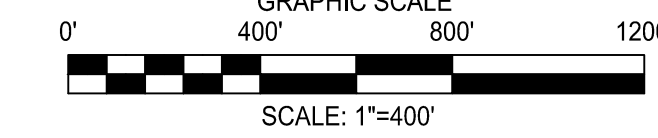
- VEHICULAR ACCESS POINT
- POTENTIAL SUBDIVISION COLLECTOR ROAD (ALIGNMENT TO BE DETERMINED WITH PARCEL LAYOUT)
- POTENTIAL SUBDIVISION MINOR ROAD (ALIGNMENT TO BE DETERMINED WITH PARCEL LAYOUT)

VILLAGES

- A SAND DOLLAR VILLAGE I
- B SAND DOLLAR VILLAGE II
- C LAKESIDE VILLAGE
- D SEA STAR VILLAGE
- E PENINSULA VILLAGE
- F SUMMERWIND VILLAGE



	NUMBER OF DELDOT-APPROVED ENTRANCES	
	2018 MASTER PLAN REVISION	2019 MASTER PLAN REVISION
ROXANA ROAD (RT. 17)	8	7
SUBSTATION ROAD	10	10
POWELL FARM ROAD	5	5
PEPPER'S CORNER ROAD	2	2
BURTON FARM ROAD	2	2
TOTAL	27	26



REVISIONS

REVISION	DATE	DESCRIPTION
1	4/29/19	REVISED PER GMB COMMENTS, DATED 4/18/19
2	5/16/19	REVISED PER PAZ COMMENTS, DATED 5/9/19
3	6/16/19	REVISED PER TOWN COMMENTS, DATED 6/6/19

CIVIL ENGINEERING ASSOCIATES, LLC

ENGINEERING • SURVEYING • CONSTRUCTION SERVICES

55 W. MAIN STREET
MIDDLETOWN, DE 19709

PHONE (302) 376-8833
FAX (302) 376-8834

WWW.CEA-DE.COM

VEHICULAR CIRCULATION FOR MILLVILLE BY THE SEA

BALTIMORE HUNDRED
SUSSEX COUNTY, DELAWARE

DATE: MARCH 22, 2019

DESIGNED BY: SPR	APPROVED BY: RHS
------------------	------------------

FILE: VEHICULAR_CIRCULATION.DWG

SHEET NO.: **MP-05**

DATE